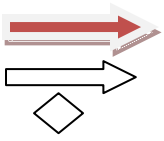
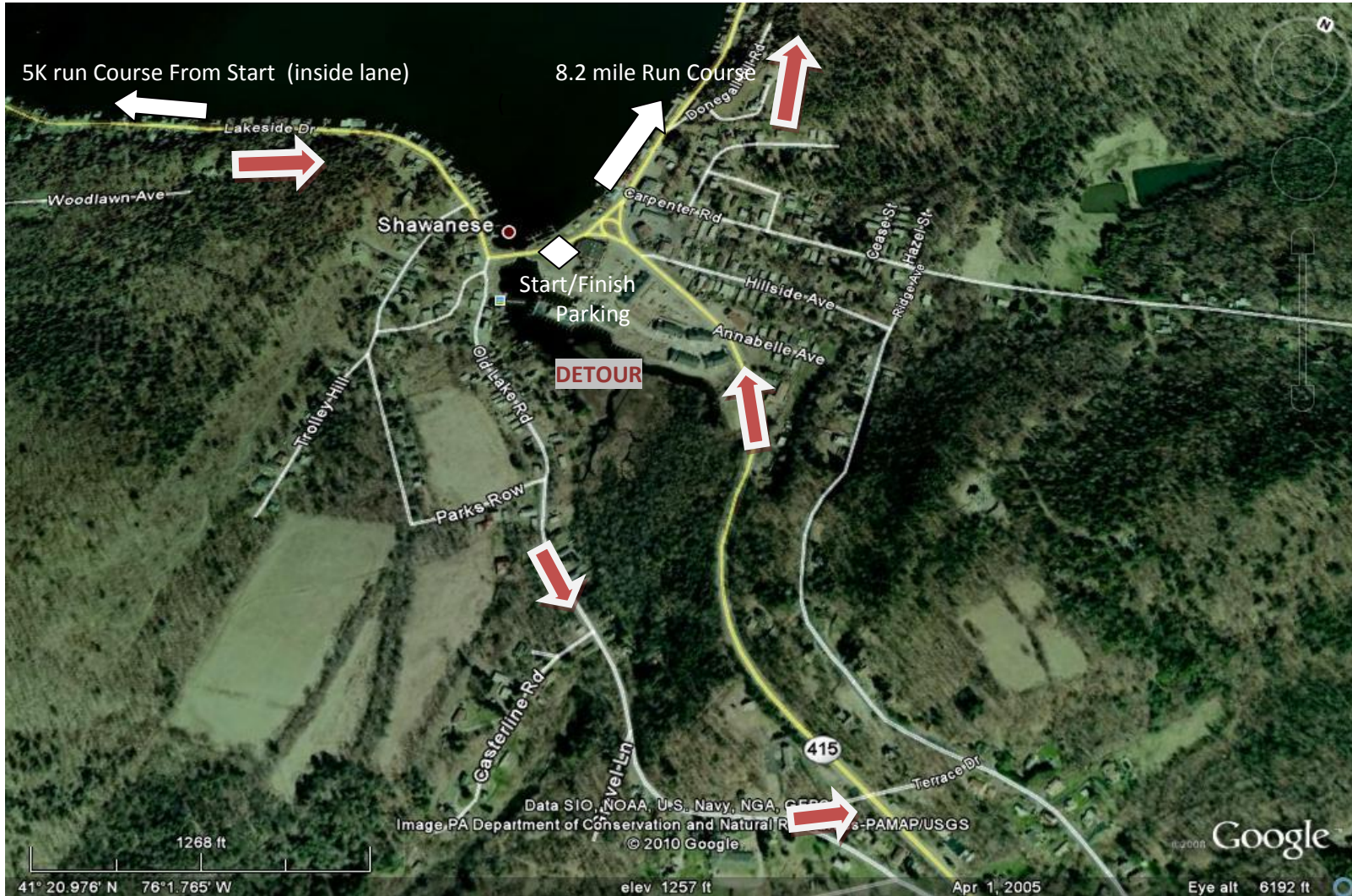


## Glen Summit Spring Water Harvey's Lake Run Start/Finish Area

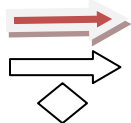
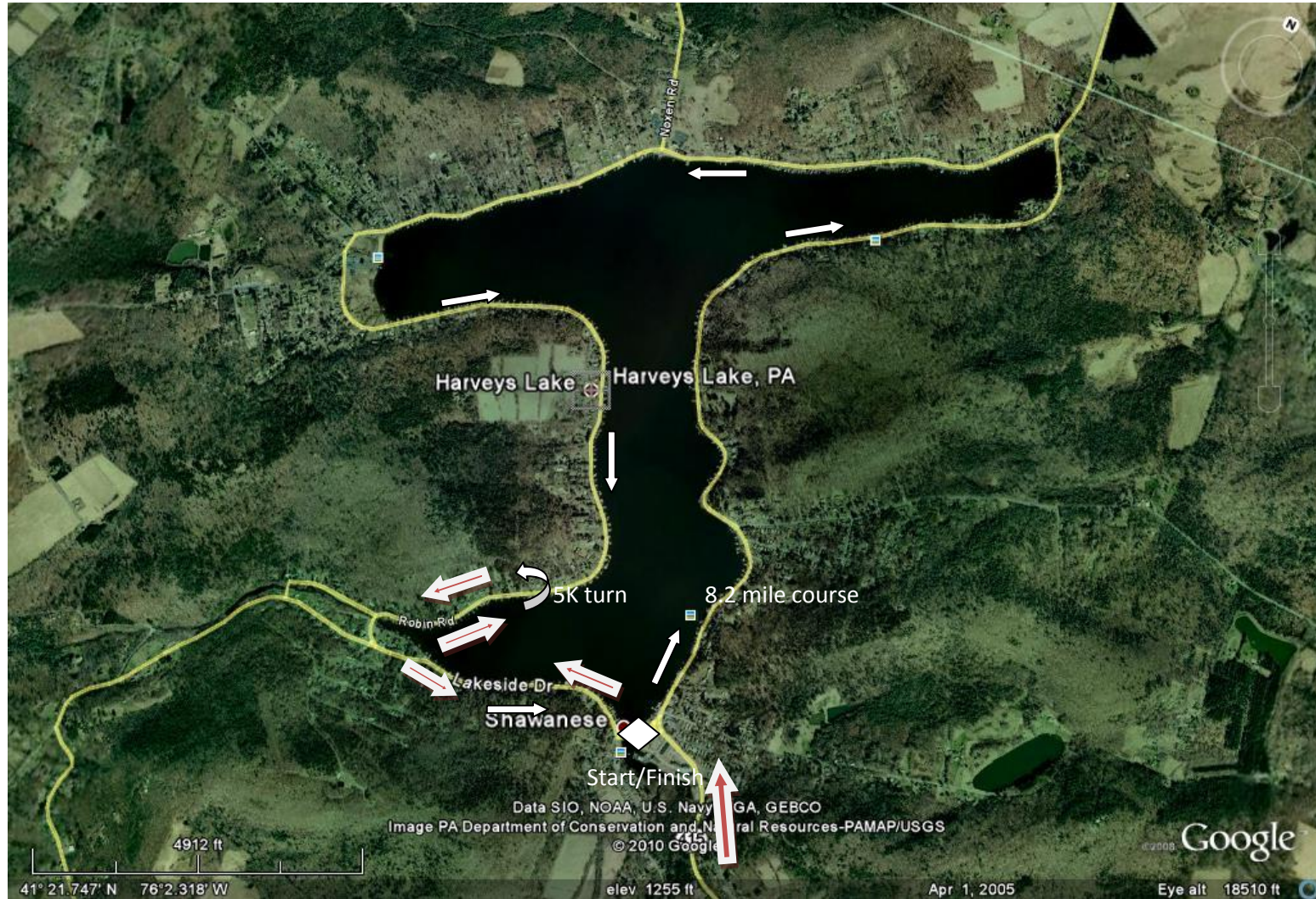


Traffic detour around start finish line. Vehicles proceed on outside loop around lake.  

 Direction of runners. Runners proceed in opposite direction of traffic on closed lane and shoulder.  

 Start/Finish Area. Closed from Old Lake Road to Route 415 intersection.

# Glen Summit Spring Water Harvey's Lake Run Course



- Direction of 5K course.
- Direction of 8.2 mile course
- Start/Finish Area. Closed from Old Lake Road to Route 415 intersection.